

WWEST TEAM MEMBERS

The biggest contributor to the success of the WWEST Program was having a dynamic, flexible team, including a manager and program assistants that were able to lead, shape, and coordinate large portions of the program, activities, and research.

The general organizational structure is shown in Figure 1. Note that not all positions existed at all times:

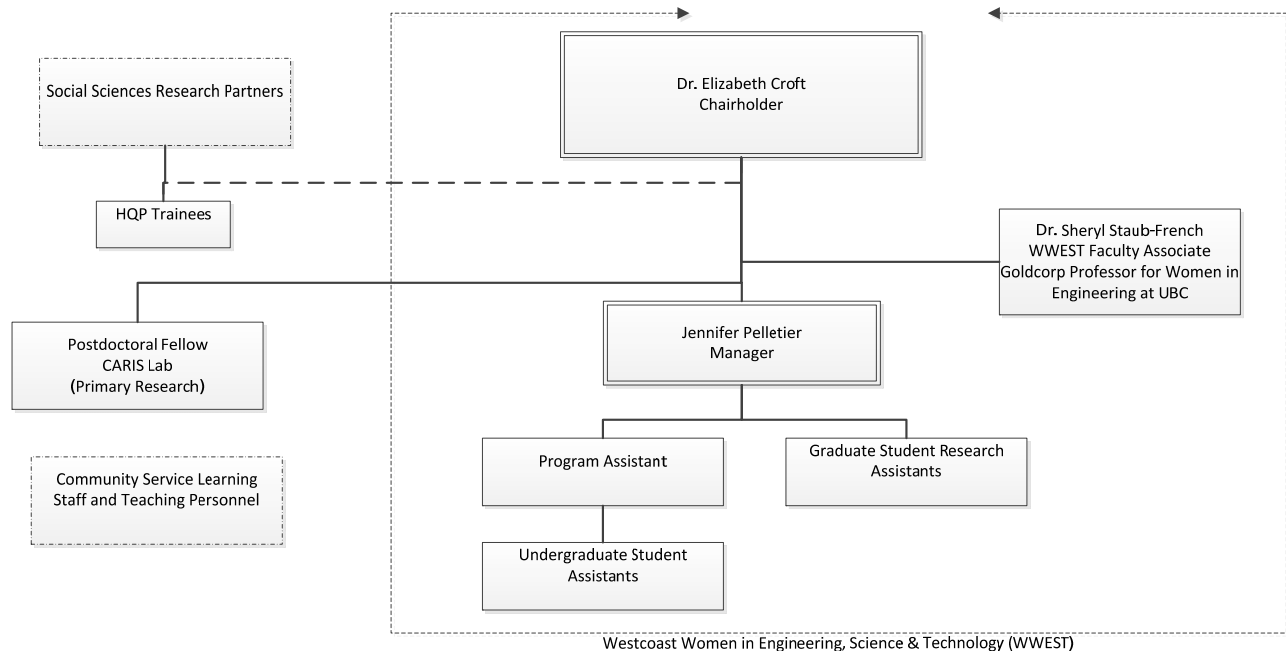


Figure 1: The General Organization Structure of WWEST.

A Manager position was integral to the organization of WWEST, allowing WWEST to have a much higher level of engagement and impact than would be possible without the additional leadership and expertise. The Manager worked alongside the Chair on strategic vision and program planning; managed the team and logistics, ensured program resources were allocated appropriately to meet the goals and objectives of each project, designed and delivered workshops and lectures, created communication pieces, and represented the program at events.

As the Manager position was part-time during the first three years of the Chair, a Program Assistant position was created to have additional permanent staff support. This provided professionalism and consistency in contact and communications, improved WWEST's ability to have a presence at events, and ensured we had the resources to properly prepare for all events, pilot programs, and speaking engagements.

In addition to the two staff positions, WWEST employed and trained a large number of undergraduate and graduate students. In addition to helping plan, prepare, and deliver workshops, events, communications, or other initiatives, each student was able to develop skills related to their educational or career goals.

In Fall 2013, Dr. Sheryl Staub-French, Associate Professor of Civil Engineering at UBC was named a WWEST Faculty Associate, supported by the Dean of the Faculty of Applied Science. She represented WWEST at a number of outreach events and speaking opportunities we would otherwise be unable to accommodate. In June 2014, Sheryl was named the Goldcorp Professor for Women in Engineering at UBC. The Professorship, under the banner *eng•cite*, will be continuing many of the events developed by or with WWEST.

STAFF AND STUDENTS CONTRIBUTING TO WWEST

- Manager:
 - Jennifer Pelletier (50% time July 2010 - January 2014; full time to September 2015)
- Program Assistants:
 - Heather Gerrits (July 2010 – July 2011, 50% time)
 - Kyle Philibert (July 2011 – April 2012, 50% time)
 - Justin Yang (May 2012 – July 2013, 50% time)
 - Janet Fraser (September 2013 – March 2014, 50% time WWEST / 50% time Network Support)
- Graduate Students:
 - Rebekah Parker – Education & Outreach Coordinator
Research Masters candidate in the Faculty of Education Eco-Justice and Sustainability program.
May 2013 – August 2015; 20 hours/week in summer, 10 hours/week during term
 - Vivian Meng – Measurement and Evaluations Coordinator
Was a Master of Science candidate in Statistics
September 2013 – August 2014, 5-10 hours/week.
- Undergraduate Students – 10 hours / week (20 hours / week in summer) unless otherwise noted:
 - Robyn Choi – Social Media Coordinator - computer science student
May 2014 – August 2015
 - Tanika Chadha – integrated engineering
January – April 2014
 - John Koo – mechanical engineering
January – April 2013
 - Anoushka Rajan – mechanical engineering
May 2011 – December 2012; summer terms were full-time (Co-op)
 - Mina Arabkhedri – mechanical engineering
May 2012 – August 2012
 - Andrea Monssen – history and economics
January 2012 – April 2012
 - Jonathan Leung – mechanical engineering
September 2011 – December 2011
 - Katherine Dennert – civil engineering
September 2011 – April 2012
 - Amanda Li – mechanical engineering
May 2011 – August 2011
 - Courtney Tiechko – biology
January - April 2011
 - Kelsey McMartin – mechanical engineering
September 2010 – April 2011
 - Krista Thielmann – mechanical engineering
September 2010 – April 2011

OTHER SUPPORTING PERSONNEL

- National Network coordination resided with the CWSE (BC/Yukon) from 2012 – February 2015. Jasreyman Noor Teja was the Network Program Assistant (50% time) from January 2012 – June 2013), with responsibilities residing within the manager role outside this period.
- Community-Based Experiential Learning Officers Alaya Boisvert and Jason Penner provided support and leadership for all Community Service Learning Activities.
- Postdoctoral Fellows Chris Parker, Amir Haddidi, Brian Gleeson and Justin Hart supported the Chair by providing leadership in the CARIS Lab, allowing Dr. Croft to maintain her research profile and experimental

robotics program while leading the CWSE (BC/Yukon) program. The postdoctoral fellow position also made feasible the numerous robotics demonstrations to the general public at open house and outreach events.

- Engendering Engineering Success team members work closely with the WWEST team. Trainees affiliated with the project who are located at UBC include William Hall (Ph.D. candidate), Kate Block (Ph.D. candidate), and Sara Ahmadian (Undergraduate Academic Assistant).

EXAMPLES OF ORGANIZATIONAL STRUCTURE AT DIFFERENT POINTS IN TIME

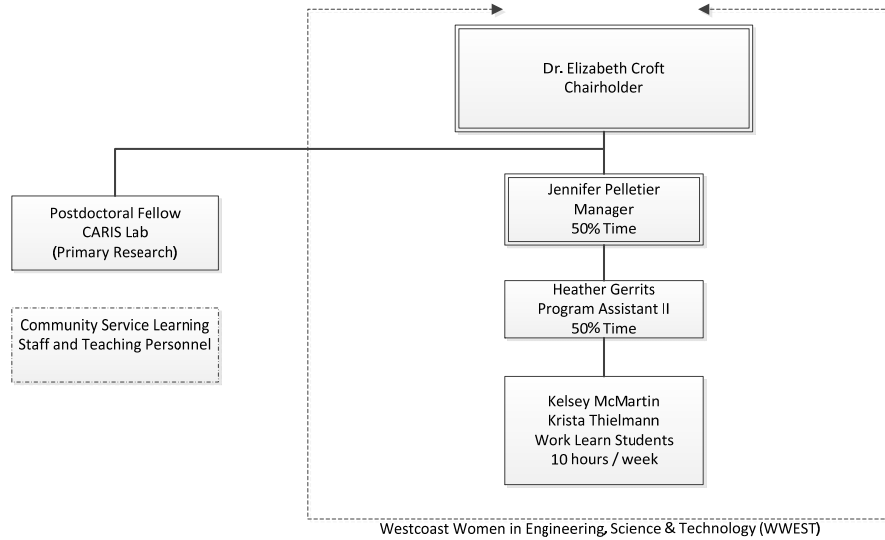


Figure 2: The 2010 Organization Structure of WWEST.

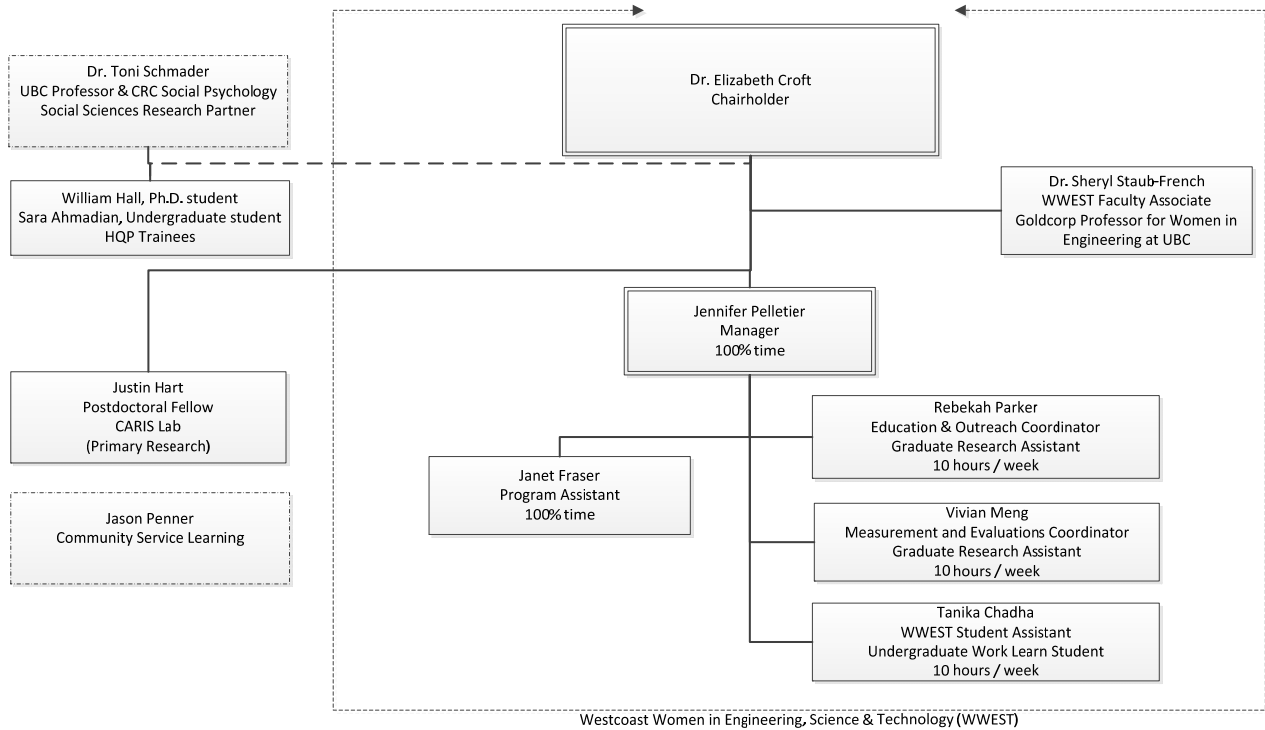


Figure 3: The Spring 2014 Organization Structure of WWEST.